



DOM ix Family

Secure your home

# DOM ix Family

SECURE YOUR HOME

## DOM ix Family

The best security for what you value most.

Your home deserves to be the safest place on earth. Thanks to the DOM ix Family, it's now easier than ever to create your very own professional grade

security system, right at your home! Rest assured and say 'hi' to a whole new level of feeling secure.

## Keeping things as secure and simple as possible

That's the DOM ix Family.

When you consider home security as a collection of separate locks, the safer you make your home, the more complicated and cumbersome things will get: you need to memorize which key goes where, make the right copies and carry

around a key chain that makes you feel like you're running a jail. But your security should never be a hassle!

By choosing the DOM ix Security System, you are assured of the greatest security

possible while keeping things super easy to use. Regardless of how many access points you'd like to cover. One key that unlocks everything, from front door to mailbox? No problem! Your home has never been more secure.





# DOM ix Family

SECURE YOUR HOME

## Meet the Family

The many talents of ix.

The DOM ix Family allows you to specifically create the level of security your home deserves. With the perfect solution for every access point, and a wide variety of options to choose from. They all have reversible keys, which means you never have to think about how you put your key in the lock: it'll always fit! You can also choose to have our unique 2-in-1 option: the cylinder comes with two sets of keys.

If ever you lose a key from the first set, simply use a key from the second set and the entire first set becomes useless. No need to change locks, and no need to call a locksmith! Everything is immediately secure again.

The DOM ix Family has three members. Each with its own unique, but fully compatible, talents.



### DOM IX TECO

DOM ix Teco is the workhorse of the DOM ix Family; perfect for all access points that simply require superior security.

\* Patent pending



### DOM IX TWIDO

The DOM ix Twido takes everything that makes the DOM ix Teco great, and improves it even further! With even more innovations, and stronger materials.



### DOM IX TWINSTAR®

The undeniable star of the family, with unique features like our 2-in-1 technology. It's the most advanced reversible cylinder we have ever created.

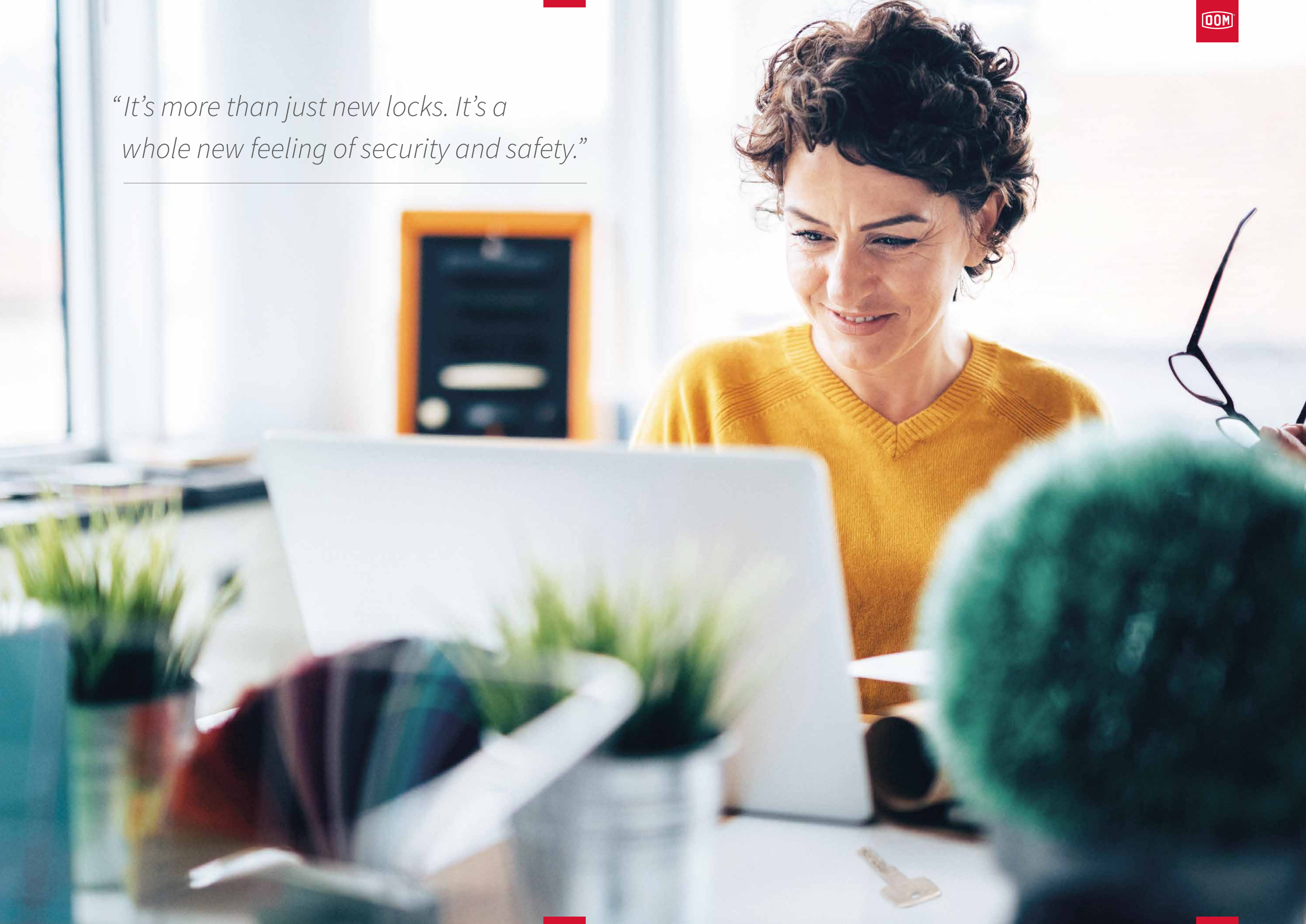
Whatever you need secured, DOM has got you covered.





*“It’s more than just new locks. It’s a whole new feeling of security and safety.”*

---



# DOM ix Family

SECURE YOUR HOME

## Family expansion

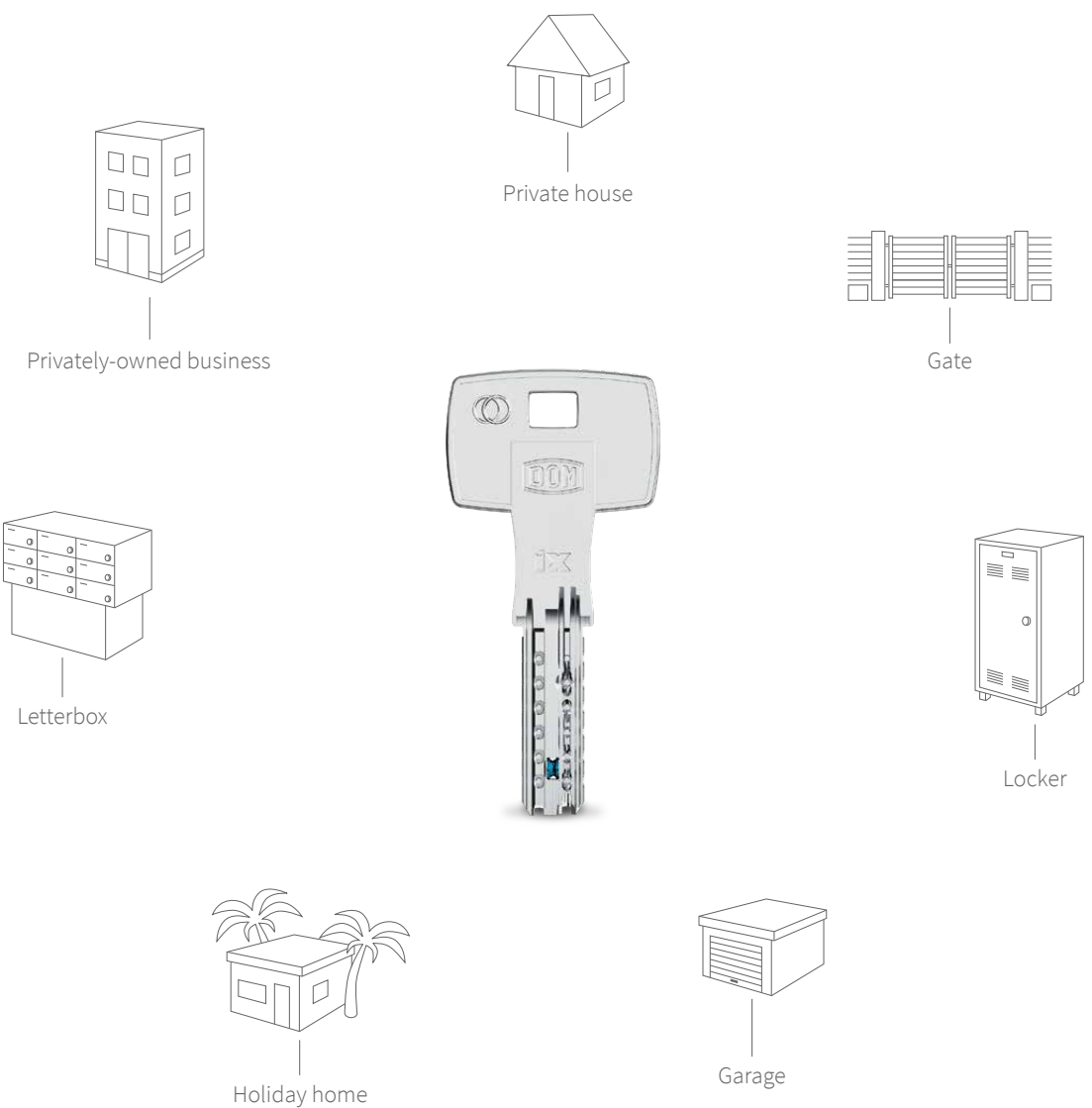
Even more flexibility and features to choose from!

Another big plus of the DOM ix Family, is that you can seamlessly integrate other DOM solutions into your security system as well. Like the excellent RS Sigma or the price winning

RS8 cylinders. You can even add digital locking solutions! It might be a bit of a cliché to say the possibilities are endless, but they really are.



Solutions that perfectly fit your lifestyle.





# DOM ix Family

SECURE YOUR HOME

Inspected, Approved.  
Safe.

Extra-strength  
burglar resistance

Patented

DIN EN1303

CE Fire resistant

Freewheel cylinder  
for gear locks

Certified and approved  
Police and Insurers agree: choose DOM ix.

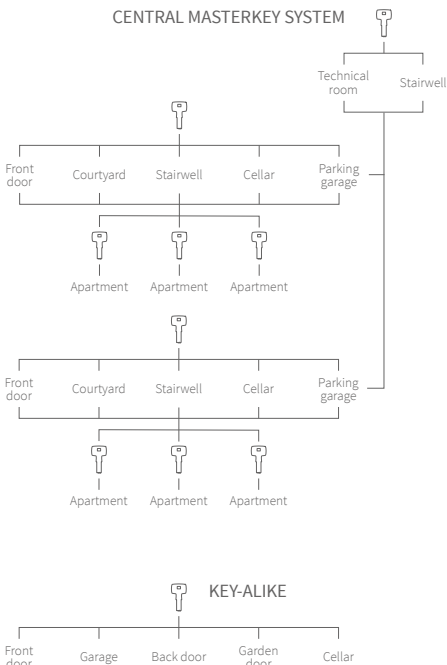
Securing everything you hold dear is no trivial matter. So, it's nice to get that little extra assurance by respected professionals and authorities, to know that you're making the right decisions. In that regard both police and insurance companies fully agree: the DOM ix Family comes highly recommended when securing your home.

“The DOM ix security system is normally used to give entire companies and office buildings the highest level of security. You don't have to imagine what it can do when used at home.”

“When we see DOM products installed in a home, we know that security has been taken very seriously. There really isn't much more a home-owner could do to keep things secure.”

Systems make your life easier  
Security that fits your situation, not the other way around.

Every household is different. That is why the DOM ix Family can be used in different configurations, or systems, that perfectly fit your unique situation. You can even take it with you when you move to another house! There's simply no need to change the way you do things around the house: your security simply adapts to you.



## Central Masterkey System

Where multiple properties are covered by one system, such as two separate buildings where each has its own Central Locking System, you can have one Masterkey that can open all shared access points in both buildings.

## Key-alike

In a 'key-alike' system, every key is alike! That means one key opens all access points, from front door to mailbox. Add the 2-in-1 feature for an extra layer of security.



DOM ix Family, to secure what you value most.





# Different access for different people

Who is allowed access where? You decide!

You'd want your friendly neighbour to feed the cat when you're on holiday. But they don't have any business in your home office! The cleaner on the other hand does! And maybe your

teenager shouldn't be able to grab the car from the garage :-)

privileges. Please ask your trusted DOM security expert to help you work out what's right for you.

The DOM ix Family allows you to create individual keys with unique access



Personal keys and privileges.

## DOM ix Family

SECURE YOUR HOME

### DOM ENiQ®

Upgrade your security with smart locks.



Take your DOM ix Security System to the next level by integrating the digital solutions of DOM ENiQ! Now you have even more options and flexibility in securing your home.

As high-tech as the ENiQ system itself is, installing it really is plug and play! It is battery powered, so there's no need for an external power supply. Integrate your DOM ix Family with your

DOM ENiQ Ecosystem, for a seamless experience. Welcome to the future!



If you can send an email, you can program ENiQ.

### DOM Cliptag

Two worlds become one.



Upgrade your physical key with the DOM Cliptag to combine your key with your transponder. Simply clip it on, and you're done! A seamless

integration of your DOM ix Family with your DOM ENiQ ecosystem, for a seamless experience.



# DOM ix Family

SECURE YOUR HOME

We are DOM  
We do more for security.

We believe that everyone and everything of value deserves to be kept secure, without compromise. This belief drives us to keep innovating and engineering new ways of securing homes, offices, hospitals and every building or property imaginable. It drives us to do more.

Ever since our foundation in Cologne (yes, we are named after Cologne's cathedral, the Dom), we've grown into a leading European security manufacturer and innovator,

with services and products in over 20 countries. But even though we've grown in size, we've never lost touch with the people we provide our security for: you, our customers! With nearly a century of experience, expertise and a level of build quality that comes with that, you can rest assured that all your DOM solutions are made to do one thing best: keeping everything you hold dear secure.



We do more,  
every day.





#### WE **DOM**ORE FOR SECURITY

We believe everyone and everything of value deserves to be kept secure, without compromise. That is why you can count on us to help you create

the perfect security for your home. Together with your trusted security experts we will do whatever it takes to make your home the safest place it can be. Now and in the future.

Your expert safety advisor:

#### DOM-SECURITY SA

20 Rue de l'Arc de Triomphe  
75017, Paris

France

T +33 (0)1 - 46 22 09 00

E [contact@dom-security.com](mailto:contact@dom-security.com)

#### DOM-UK LTD

Unit 12, Cleton Street Business Park

Cleton Street, Tipton, DY4 7TR

United Kingdom

T +44 (0)121 - 569 7790

E [support@dom-uk.co.uk](mailto:support@dom-uk.co.uk)

#### DOM SECURITY - EXPORT DEPARTMENT

##### DOM-METALUX S.A.S.

47 bis Rue Jeanne d'Arc

52115 SAINT-DIZIER cedex

France

T +33 (0)3 - 25 05 86 30

F +33 (0)3 - 25 56 62 61

E [export@dom-europe.fr](mailto:export@dom-europe.fr)

[WWW.DOM-SECURITY.COM](http://WWW.DOM-SECURITY.COM)