

DOM®



DOM ix Teco®

Easy access to superior security



# DOM ix Teco®

EASY ACCESS TO SUPERIOR SECURITY

## DOM ix Reversible key locking system

Our most intelligent Mechanical Security System. Ever.

The DOM ix Range of Security Solutions is designed and engineered around the latest innovations and techniques in mechanical security. Never before have we managed to pack this much

intelligence and know how in our cylinders! For you, this means that implementing a perfect security system is easier than ever: DOM ix already has done all the thinking for you!



## DOM ix Teco®

Easy access to superior security.



Your DOM ix Teco cylinder offers the perfect balance of superior security without going overboard on features, or price! It's the ideal work horse for your security system, allowing you

to enjoy the ease of use and level of security of a reversible key in any and every access point.

# DOM ix Teco®

EASY ACCESS TO SUPERIOR SECURITY

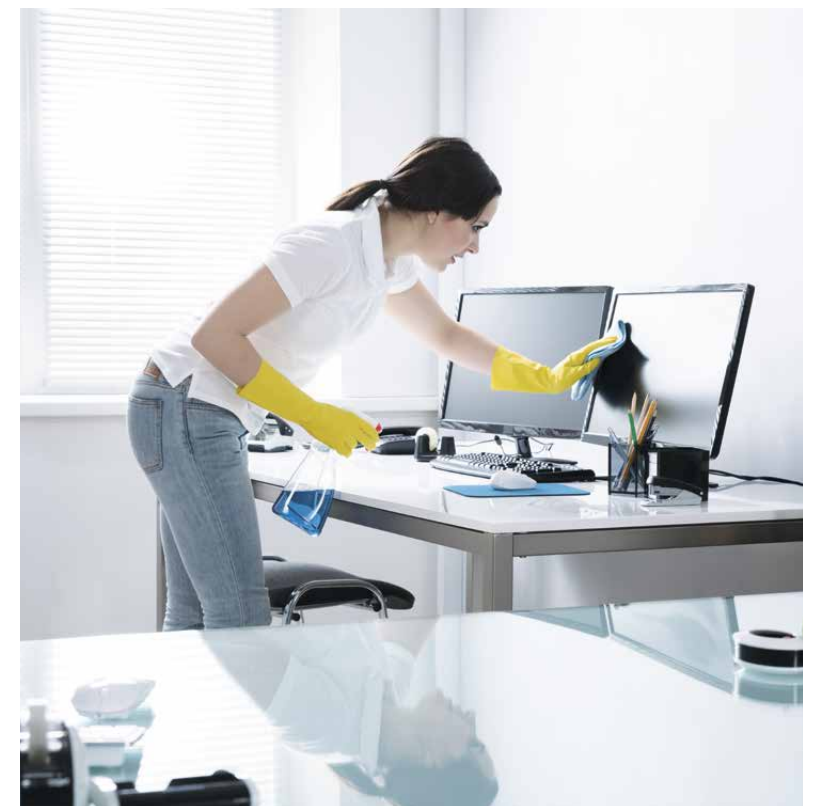


## Impressed and Impressive

A small detail with big consequences.

Not only is a reversible key much easier to use - there's no right or wrong way to insert it - but the DOM ix Teco also offers a much greater level of security thanks to a little indent on the key blade. This impressed recess actually makes

it extremely hard to replicate your key. Who knew that such a small and simple detail could add such an impressive extra layer of security?



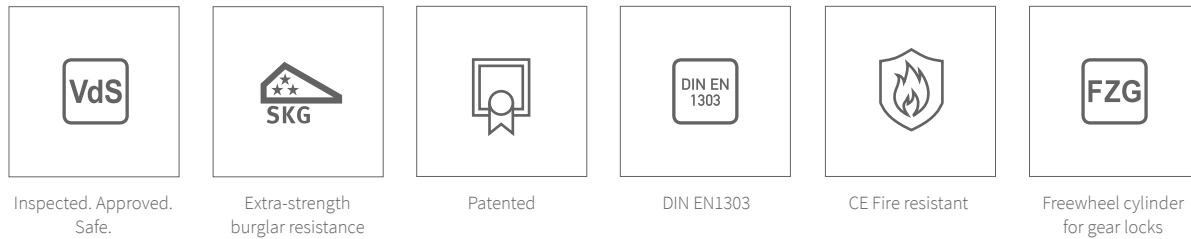
## Benefits

- Easy and convenient key entry.
- Suitable for a wide range of applications from front doors to mailboxes, all operated with the same key.
- Suitable for complex masterkey systems for large buildings.
- Optional modular technology with hardened steel for better protection against violent "breaking" and "core pulling" of the cylinder.
- Resistant to the most common burglary methods, such as knocking and other manipulation techniques.
- Matched to all common security fittings with anti-core pulling function.
- Durable and wear-resistant key made of nickel silver.



# DOM ix Teco®

EASY ACCESS TO SUPERIOR SECURITY



## Certified and qualified

Secure yourself with top marks.

You wouldn't guess by the looks, but your DOM ix products are filled to the brim with innovative technology, patents and intelligent security. All adding up to security that can live up to your expectations and

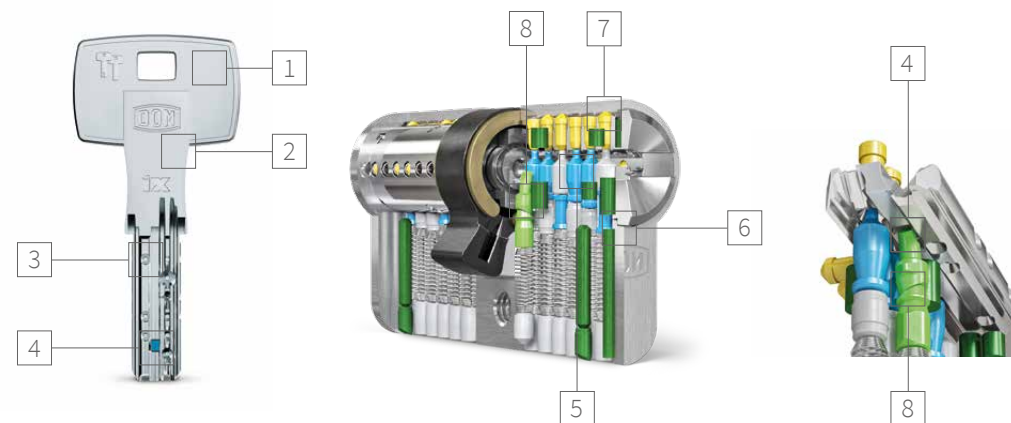
requirements. If there's one thing these accolades can tell you, it's that you can rest assured you've made the right decision.





## In detail

See what's under the hood.



In detail

- |   |  |      |  |
|---|--|------|--|
| 1 | NEW KEY HEAD DESIGN  | 7    | UP TO 12 REVISION PINS   |
| 2 | LENGTH OF KEY BLADE<br>matched to all standard security fittings | 8    | SPRUNG PIN QUERY<br>for the additional stamped recess  |
| 3 | COMPLEX CODING IN THE KEY  | 5, 8 | 7 SPRUNG TUMBLERS<br>made of special brass or hardened steel,<br>including function pin for the recess |
| 4 | KEY<br>with additional stamped recess                            | 4, 8 | QUERY SITUATION OF PIN TUMBLER<br>and the stamped recess in the key                                    |
| 5 | ANTI BUMPING & ANTI PICKING PINS                                 |      |  |
| 6 | DRILL-OPEN PROTECTION VARIANT                                    |      |  |



# Variants for endless combinations

All you need to create a Tailor Fit Security System.

The DOM ix Range comes in countless variations, each with their own unique properties and features. Because not every access point has the same security requirements: the front door of your office is very different from your mailbox. The DOM ix Range provides specific

solutions for everything. These can be combined to create security perfectly suited to your home. It might be a bit of a cliché to say the possibilities are endless, but they really are.



**382 HEAVY CYLINDER CAM LOCK**  
Lever cylinders are used, for example, to lock steel doors. The attached lever is actuated by the closing process and functions as a bolt.  
Range of application: Letter boxes, lockers, safes, boxes, wardrobe lockers, inspection flaps, vending machines, etc.



**777G3 PADLOCK**  
Range of application: Grilles, doors, gates, cabinets, tool boxes, basement windows, sheds, switchgear, barriers, etc.

- Clear shackle height: 32 mm.
- Housing width: 56 mm.
- Classification according to EN 12320 Grade 3.
- Standard: forced locking.
- Optional: with self-locking.
- Can be delivered with clear shackle height 60 mm or 120 mm on request.
- Compatible with any Euro profile half cylinder.



**VARIO-DOUBLE CYLINDER-SQUARE CORE WITH K6 KNOB**  
Locked from one side with knob and from the other side with 8 mm square key.  
Range of application: garbage can containers, switch cabinets, etc.

- 8 mm square.
- Also available as half cylinder.
- Available with knob version K6 or with square on both sides.



**777G5 HEAVY PADLOCK**  
Heavy-duty padlock for protection of larger valuables / objects or in the event of a high risk of theft.  
Range of application: Grilles, doors, gates, cabinets, tool boxes, basement windows, sheds, switchgear, barriers, etc.

- A padlock with grade 5 security class according to DIN EN 12320.
- Compatible with any Euro profile half cylinder.



**2222 SWISS ROUND CYLINDER**  
Swiss round cylinder offers key access from both sides.  
Range of application: Front doors, cellar doors, apartment doors, etc. specially for the Swiss market.

- If required also lockable if the key is inserted from one side (333T).
- Can be incorporated into all DOM Masterkey systems.
- Optional: seawater-resistant version.



**CUBICLE CYLINDER**  
The knob cylinder with engaged indicator is ideal for WC doors with profile cylinder device.  
Range of application: Toilet doors, dressing rooms, etc.

- K6 Knob with Vacant and Engaged indicator.
- 90° closing movement.
- 90° closing travel limitation.
- In emergencies also opening from outside possible.
- Only for single turn lock cases.

# The finishing touch

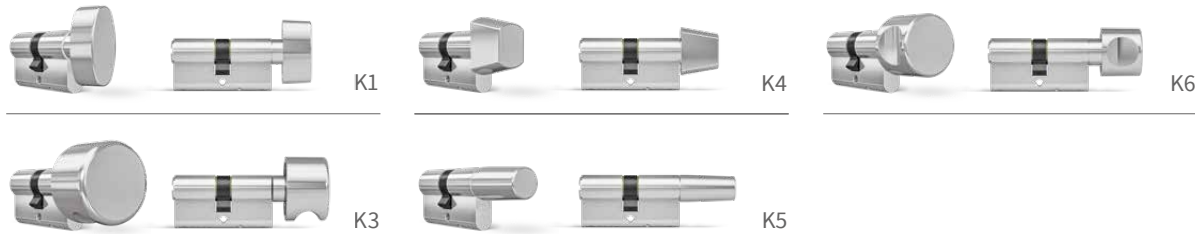
Customize colours and knobs.

All cylinders can be supplied in various metal colour options through an electroplating dye process. This may seem a subtle difference, but a coloured

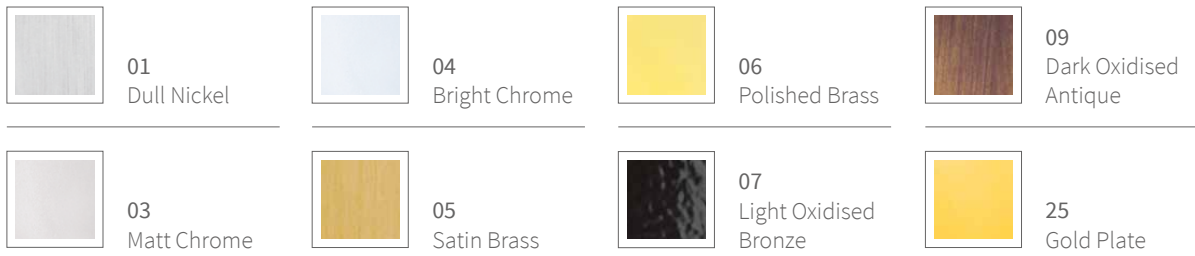
cylinder can truly alter the look of your doors, making every detail match your carefully designed interior style. Choosing your knob not only further

complements this, but it can change the way you interact with your doors, and how they feel. Perfect security with the perfect look and feel.

## Knobs



## Colours







**333H HALF CYLINDER**  
Half cylinder offers key access from one side only.  
Range of application: Technical doors, central entrance,  
Switching cylinder for lift controller.

- Adjustable cam in 8 settings.
- Available with 360° freewheel functions (333FRLH).
- Available in different lengths and the flexible modular technology.
- Available with gearwheel cam 10 and 14.
- Can be incorporated into all DOM Masterkey systems.
- Optional: seawater-resistant version.



**333K6 PROFILE DOUBLE CYLINDER WITH K6 KNOB**  
A double cylinder with knob offers key access from one side and  
a knob option on the other side of the door.

- Can be incorporated into all DOM Masterkey systems.
- Optional: seawater-resistant version.



**333 DOUBLE CYLINDER**  
A double cylinder offers key access from both sides.  
Range of application: Front doors, cellar doors, apartment doors, etc.

- Available with 360° freewheel functions (33 FRL).
- If required also lockable if the key is inserted from one side (333T).
- Can be incorporated into all DOM Masterkey systems.
- Optional: seawater-resistant version.



**333KRU CLASSROOM CYLINDER**  
Classroom cylinder with KRL knob and friction clutch.  
Range of application: in public institutions, schools, kindergartens.

- A classroom cylinder lets you unlock the door with the knob from the inside.
- Opens in any case even if the cylinder was locked by an authorized key from the outside.
- Can be incorporated into all DOM Masterkey systems.



**333FRL / 333FRLH**  
Double or half cylinder with freewheel function for gear locks.  
Range of application: corridor doors, emergency exits,  
fire doors mortise locks with panic function.

- With cylinders which are installed in mortise locks with panic function, e.g. in corridor doors or emergency doors.
- This function ensures that both cylinder cores of the profile cylinder are free to rotate when the keys are removed.
- Can be incorporated into all DOM Masterkey systems.



**555P / 555R PROFILE CYLINDER**  
Range of application: box locks, additional locks, garage door locks

- Version for wooden doors 555P.
- Version for metal doors 555R.

**THE PERFECT START  
FOR YOUR SECURITY**  
Your DOM ix solutions are the perfect  
base upon which you can build your  
security system for years to come.

Adaptable, expandable,  
upgradeable. Whatever you need,  
your DOM security system will grow  
along with you.

Your expert safety advisor:

**DOM-SECURITY SA**  
20 Rue de l'Arc de Triomphe  
75017, Paris  
France  
T +33 (0)1 - 46 22 09 00  
E [contact@dom-security.com](mailto:contact@dom-security.com)

**DOM-UK LTD**  
Unit 12, Cleton Street Business Park  
Cleton Street, Tipton, DY4 7TR  
United Kingdom  
T +44 (0)121 - 569 7790  
E [support@dom-uk.co.uk](mailto:support@dom-uk.co.uk)

**DOM SECURITY - EXPORT DEPARTMENT**  
**DOM-METALUX S.A.S.**  
47 bis Rue Jeanne d'Arc  
52115 SAINT-DIZIER cedex  
France  
T +33 (0)3 - 25 05 86 30  
F +33 (0)3 - 25 56 62 61  
E [export@dom-europe.fr](mailto:export@dom-europe.fr)

**WWW.DOM-SECURITY.COM**