

DOM®



DOM ix TwinStar®  
The key has evolved



# DOM ix TwinStar®

THE KEY HAS EVOLVED



## DOM ix Reversible key locking system

Our most intelligent Mechanical Security System. Ever.

The DOM ix Range of Security Solutions is designed and engineered around the latest innovations and techniques in mechanical security. Never before have we managed to pack this much intelligence and know how in our cylinders! For you, this means that implementing a perfect security system is easier than ever: DOM ix already has done all the thinking for you!



## DOM ix TwinStar®

The key has evolved



It may look like a regular key, but your DOM ix TwinStar is the pinnacle of evolution of DOM keys. Every technology, innovation and patent for mechanical security ever developed by our engineers has led to this unique reversible key. It has our most intricate copy protection technologies incorporated into the key blade, and more pins for more layers of security and possible combinations. Plus the greatest ease of use thanks to the reversible technology. There really has never been a key like this.

# DOM ix TwinStar®

THE KEY HAS EVOLVED

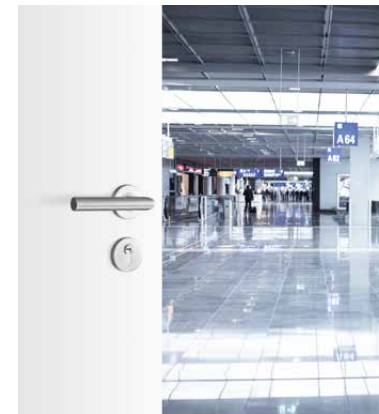


## On a roll

A moveable element for rock solid security.

It looks like just a small wheel, but the double roller in the key blade of your DOM ix TwinStar is actually a pretty big deal. Not only does it make your cylinder almost impossible to replicate unless you have the right specialised equipment, It looks like

just a small wheel, creates a vast number of extra key combinations, making it a perfect addition to your security system. But the best thing is that it's still just as easy to use as any regular reversible key.



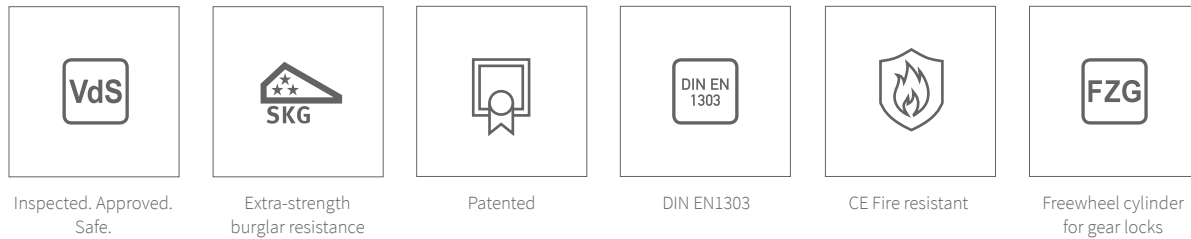
## Benefits

- Easy and convenient key entry.
- Suitable for a wide range of applications from front doors to mailboxes, all operated with the same key.
- Optional modular technology with hardened steel for better protection against violent "breaking" and "core pulling" of the cylinder.
- Optional 2-in-1 system for highest securitysecond key if first key is lost (recodable system).
- Resistant to the most common burglary methods, such as knocking and other manipulation techniques.
- Suitable for complex masterkey systems for large buildings.
- Matched to all common security fittings with anti-core pulling function.
- Durable and wear-resistant key made of nickel silver.



# DOM ix TwinStar®

THE KEY HAS EVOLVED

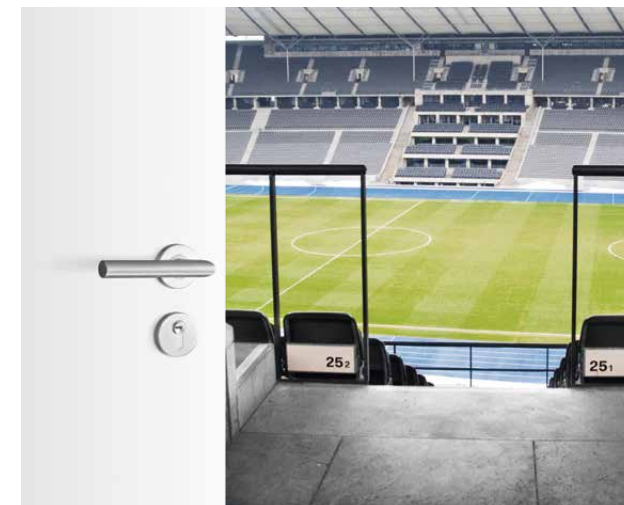


## Certified and qualified

Secure yourself with top marks.

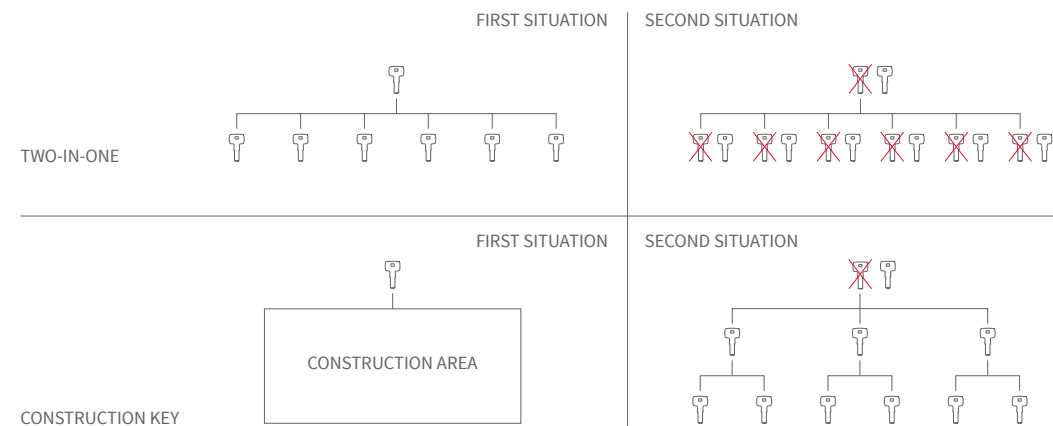
You wouldn't guess by the looks, but your DOM ix products are filled to the brim with innovative technology, patents and intelligent security. All adding up to security that can live up to your expectations and

requirements. If there's one thing these accolades can tell you, it's that you can rest assured you've made the right decision.



## DOM ix TwinStar®

## THE KEY HAS EVOLVED



# Benefits upon benefits

Even more reasons to choose DOM.

Besides the fact that DOM can help you design, build and maintain the perfect security system, choosing DOM also provides you with unique and practical security features which you will find nowhere else. These range from adding an extra layer of security or safety to simply making your life a bit easier.

## TWO-IN-ONE

This unique feature allows you to change the locks in your system,

without actually physically changing any lock! With two-in-one, every cylinder has a fallback configuration built in, and comes with a secondary set of keys. When you suspect your security has been compromised, simply insert a key from the secondary set, and the primary set instantly becomes obsolete! In a larger system DOM will hold on to the secondary set for you, making sure the transition from primary to secondary set goes smoothly throughout your entire organisation.

### CONSTRUCTION KEY

A feature specifically designed for construction purposes, the Construction Key feature allows construction workers to use their own set of keys during the build of an property. But as soon as construction is complete, and the end user starts using their exclusive set of keys, the Construction Keys become obsolete. No need to go around the entire project to change locks!

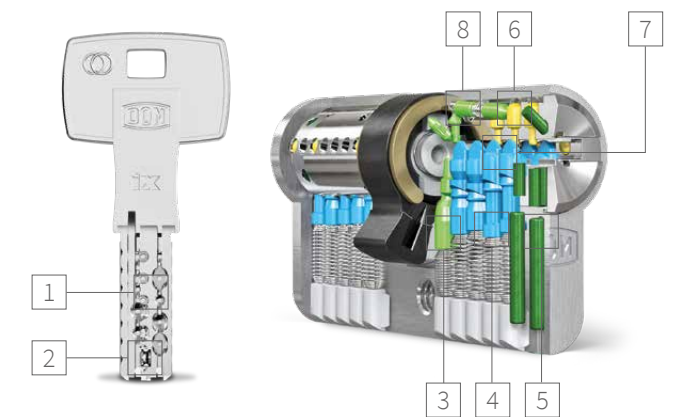
ix TwinStar in detail



## In detail

See what's under the hood.

- 1 COMPLEX CODING in the reversible key
- 2 TWO INDEPENDENTLY MOVING ROLLERS
- 3 QUERY ELEMENTS for the rollers
- 4 ANTI BUMPING & ANTI PICKING PINS
- 5 (ENHANCED) DRILL-OPEN(ING) PROTECTION
- 6 10 PROFILE CONTROL PINS
- 7 11 SPRUNG TUMBLERS
- 8 QUERY ELEMENTS for the rollers



# DOM ix TwinStar®

THE KEY HAS EVOLVED

## Variants for endless combinations

All you need to create a Tailor Fit Security System.

The DOM ix Range comes in countless variations, each with their own unique properties and features. Because not every access point has the same security requirements: the front door of your office is very different from your mailbox. The DOM ix Range provides specific

solutions for everything. These can be combined to create security perfectly suited to your home. It might be a bit of a cliché to say the possibilities are endless, but they really are.



### 382 HEAVY CYLINDER CAM LOCK

Lever cylinders are used, for example, to lock steel doors. The attached lever is actuated by the closing process and functions as a bolt. Range of application: Letter boxes, lockers, safes, boxes, wardrobe lockers, inspection flaps, vending machines, etc.



### 777G3 PADLOCK

Range of application: Grilles, doors, gates, cabinets, tool boxes, basement windows, sheds, switchgear, barriers, etc.

- Clear shackle height: 32 mm.
- Housing width: 56 mm.
- Classification according to EN 12320 Grade 3.
- Standard: forced locking.
- Optional: with self-locking.
- Can be delivered with clear shackle height 60 mm or 120 mm on request.
- Compatible with any Euro profile half cylinder.



### VARIO-DOUBLE CYLINDER-SQUARE CORE WITH K6 KNOB

Locked from one side with knob and from the other side with 8 mm square key. Range of application: garbage can containers, switch cabinets, etc.

- 8 mm square.
- Also available as half cylinder.
- Available with knob version K6 or with square on both sides.



### 777G5 HEAVY PADLOCK

Heavy-duty padlock for protection of larger valuables / objects or in the event of a high risk of theft. Range of application: Grilles, doors, gates, cabinets, tool boxes, basement windows, sheds, switchgear, barriers, etc.

- A padlock with grade 5 security class according to DIN EN 12320.
- Compatible with any Euro profile half cylinder.



### 2222 SWISS ROUND CYLINDER

Swiss round cylinder offers key access from both sides. Range of application: Front doors, cellar doors, apartment doors, etc. specially for the Swiss market.

- If required also lockable if the key is inserted from one side (333T).
- Can be incorporated into all DOM Masterkey systems.
- Optional: seawater-resistant version.



### CUBICLE CYLINDER

The knob cylinder with engaged indicator is ideal for WC doors with profile cylinder device.

Range of application: Toilet doors, dressing rooms, etc.

- K6 Knob with Vacant and Engaged indicator.
- 90° closing movement.
- 90° closing travel limitation.
- In emergencies also opening from outside possible.
- Only for single turn lock cases.

## The finishing touch

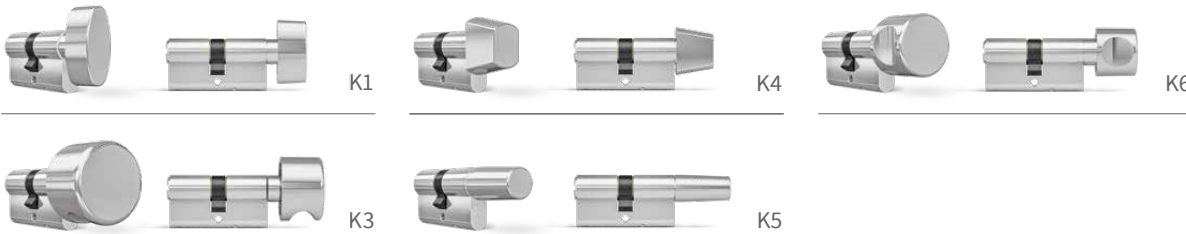
Customize colours and knobs.

All cylinders can be supplied in various metal colour options through an electroplating dye process. This may seem a subtle difference, but a coloured

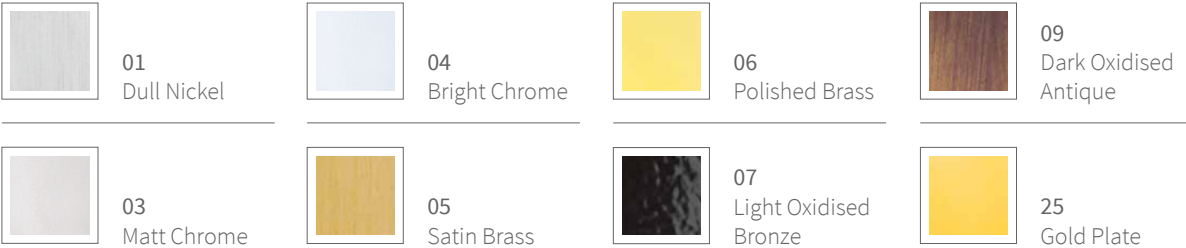
cylinder can truly alter the look of your doors, making every detail match your carefully designed interior style. Choosing your knob not only further

complements this, but it can change the way you interact with your doors, and how they feel. Perfect security with the perfect look and feel.

### Knobs



### Colours







**333H HALF CYLINDER**  
Half cylinder offers key access from one side only.  
Range of application: Technical doors, central entrance,  
Switching cylinder for lift controller.

- Adjustable cam in 8 settings.
- Available with 360° freewheel functions (333FRLH).
- Available in different lengths and the flexible modular technology.
- Available with gearwheel cam 10 and 14.
- Can be incorporated into all DOM Masterkey systems.
- Optional: seawater-resistant version.



**333K6 PROFILE DOUBLE CYLINDER WITH K6 KNOB**  
A double cylinder with knob offers key access from one side and  
a knob option on the other side of the door.

- Can be incorporated into all DOM Masterkey systems.
- Optional: seawater-resistant version.



**333 DOUBLE CYLINDER**  
A double cylinder offers key access from both sides.  
Range of application: Front doors, cellar doors, apartment doors, etc.

- Available with 360° freewheel functions (33 FRL).
- If required also lockable if the key is inserted from one side (333T).
- Can be incorporated into all DOM Masterkey systems.
- Optional: seawater-resistant version.



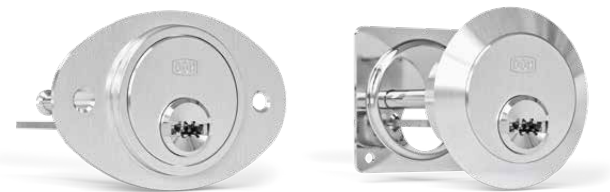
**333KRU CLASSROOM CYLINDER**  
Classroom cylinder with KRL knob and friction clutch.  
Range of application: in public institutions, schools, kindergartens.

- A classroom cylinder lets you unlock the door with the knob from the inside.
- Opens in any case even if the cylinder was locked by an authorized key from the outside.
- Can be incorporated into all DOM Masterkey systems.



**333FRL / 333FRLH**  
Double or half cylinder with freewheel function for gear locks.  
Range of application: corridor doors, emergency exits,  
fire doors mortise locks with panic function.

- With cylinders which are installed in mortise locks with panic function, e.g. in corridor doors or emergency doors.
- This function ensures that both cylinder cores of the profile cylinder are free to rotate when the keys are removed.
- Can be incorporated into all DOM Masterkey systems.



**555 TAILPIECE CYLINDER**  
The outer cylinder for screw-in locks is for use in wooden and metal doors.  
Range of application: box locks, additional locks, garage door locks

- Version for wooden doors 555P.
- Version for metal doors 555R.

## THE PERFECT START FOR YOUR SECURITY

Your DOM ix solutions are the perfect  
base upon which you can build your  
security system for years to come.

Adaptable, expandable,  
upgradeable. Whatever you need,  
your DOM security system will grow  
along with you.

Your expert safety advisor:

**DOM-SECURITY SA**  
20 Rue de l'Arc de Triomphe  
75017, Paris  
France  
T +33 (0)1 - 46 22 09 00  
E [contact@dom-security.com](mailto:contact@dom-security.com)

**DOM-UK LTD**  
Unit 12, Cleton Street Business Park  
Cleton Street, Tipton, DY4 7TR  
United Kingdom  
T +44 (0)121 - 569 7790  
E [support@dom-uk.co.uk](mailto:support@dom-uk.co.uk)

**DOM SECURITY - EXPORT DEPARTMENT**  
**DOM-METALUX S.A.S.**  
47 bis Rue Jeanne d'Arc  
52115 SAINT-DIZIER cedex  
France  
T +33 (0)3 - 25 05 86 30  
F +33 (0)3 - 25 56 62 61  
E [export@dom-europe.fr](mailto:export@dom-europe.fr)

**WWW.DOM-SECURITY.COM**